

Process Indicators

PI-44U / PI-77U / PI-88U / PI-99U



Features

- Universal Sensor Input
- Programmable Analog Range (-1999 to 9999)
- Excitation Voltage : 5 VDC/10 VDC/12 VDC/24 VDC
- Program Lock function
- User Calibration Available For Analog Inputs
- Universal supply voltage (90 to 270 VAC)
- 24 VDC Available on Request





Technical Specifications

Display Specification

Digits	4 Digits Single Row 7 Segment LED Display				
Height	Model	PI-44U	PI-77U	PI-88U	PI-99U
PV (White)		0.36"	0.56"	0.56"	0.56"

Keys

4 Controlling keys for configuration and operation

SET  SHIFT  ACK1  ACK2 

Environmental Specification

Temperature	Operating - 0 to 50°C
Storage	-20° to 75°C
Humidity	95% RH (Non-condensing)

Input Specification

Sensor Input	Thermocouple - J,K,R,S,N,T,B RTD - Pt-100
Analog Input	0-1 VDC, 0-3.3 VDC, 0-5 VDC 0-10 VDC, 0-20 mA , 4-20 mA
Resolution	1 / 0.1 / 0.01 / 0.001
Accuracy	0.3% FS
Sampling Rate	250 m Sec

Auxiliary Supply Specification

Supply Voltage	90 - 270 VAC (24 VDC Available on Request)
----------------	---

Certification

None



Make In India



Accurate



Reliable



Affordable



User Friendly

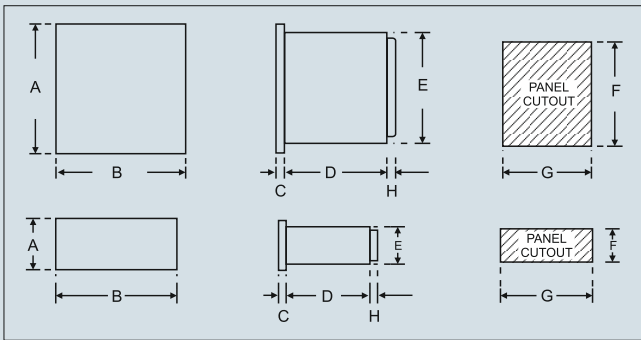
Functional Specification

Analog Input Logic	Direct / Reverse
Process Value Offset	-25 to 25
Input Filter	1 to 10

General Description

Model	PI-44U	PI-77U	PI-88U	PI-99U
Weight (Gms)	140	180	200	240
Enclosure	Molded ABS			
Color	Black			
Accessories	1 Pair of Mounting clamp			
Terminal Cable Size	Barrier Type terminal cable Size (2.5 mm ²)			

Mechanical Dimensions



Mechanical Dimensions

Model	Dim A	B	C	D	E	F	G	H
PI-44U	48	48	8	85	43	44	44	9
PI-77U	72	72	10	65	66	68	68	9
PI-88U	48	96	10	53	43	44	92	9
PI-99U	96	96	10	53	89	92	92	9

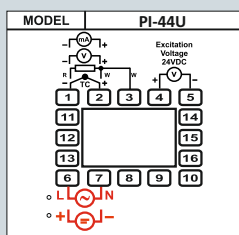
Output Specification

Output 1	Relay / SSR Drive (factory Set)
Output 2	Relay / SSR Drive (Factory Set)
Relay	5A @ 250 VAC / 30 VDC
SSR Drive	12 VDC @ 30mA

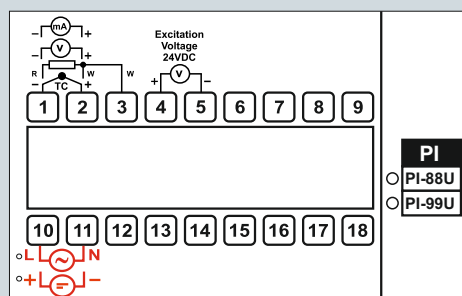
Order Code : PI-XXU Series

Size	Model
4 (48X48X85)	PI-44U
7 (72X72X65)	PI-77U
8 (48X96X53)	PI-88U
9 (96X96X53)	PI-99U

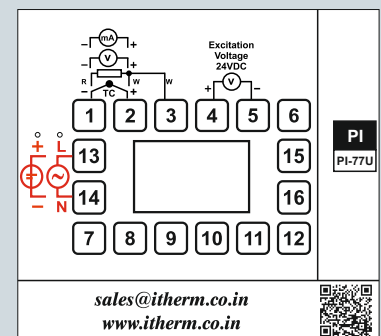
Terminal Diagram



PI-44U



PI-88U / PI-99U



PI-77U

Input Sensor Range

Sensor Input	Range	Resolution	Accuracy
Fe-k(J) T/C	-1999 to 9999	1	± 1
Cr-AL-(K) T/C	-1999 to 9999	1	± 1
(R)T/C	-1999 to 9999	1	± 1
(S)T/C	-1999 to 9999	1	± 1
TC-N	-1999 to 9999	1	± 1
TC-T	-1999 to 9999	1	± 1
TC-B	-1999 to 9999	1	± 1
Pt-100 (RTD)	-1999 to 9999	1	± 1
Pt-100 (RTD 0.1)	-1999 to 9999	1	± 1
0 ~ 20 mA	-1999 to 9999	1 / 0.1 / 0.01 / 0.01	} + 0.1 % of Full Scale
4 ~ 20 mA	-1999 to 9999	1 / 0.1 / 0.01 / 0.001	
0 ~ 1 VDC	-1999 to 9999	1 / 0.1 / 0.01 / 0.001	
0 ~ 3.3 VDC	-1999 to 9999	1 / 0.1 / 0.01 / 0.001	
0 ~ 5 VDC	-1999 to 9999	1 / 0.1 / 0.01 / 0.001	
0 ~ 10 VDC	-1999 to 9999	1 / 0.1 / 0.01 / 0.001	